



Global Leading Birth Pool Specialists

[www.edelimmersys.com](http://www.edelimmersys.com)





## GLOBAL LEADING BIRTH POOL SPECIALISTS

Making the use of birth and labor hydrotherapy pools a safe, available option for mothers

Edel Immersys products are designed in collaboration with midwives and health professionals to be safe and easy to use, our birth pools are manufactured from designs that are aesthetically pleasing and engineered to the highest standards; maximising the many benefits for you and/or your organisation.

We believe in working with you in close partnership from the design stage of your project up to installation to ensure that you choose the appropriate products to suit your needs, objectives and plans. This will help you see a high return on your investment. Women and families will choose your facility knowing you have invested in the best products to ensure they have the experience they desire.

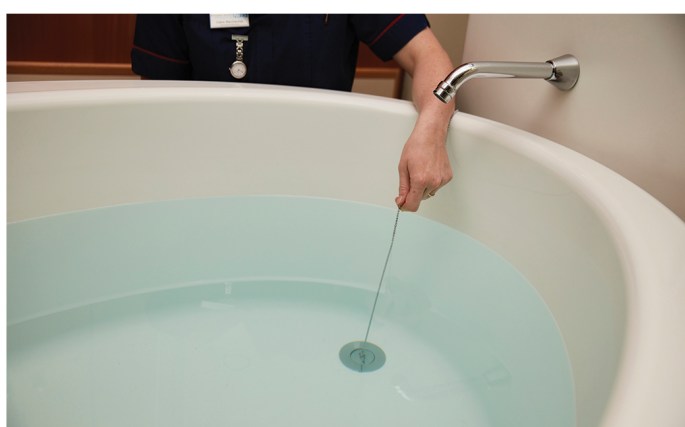


## FP3 POOL FEATURES



### Freestanding Design

Midwives prefer a freestanding design to facilitate safer positions when attending to women. No extra building required to install the pool such as tiling or panels.



### Single Use Plug/Stopper

Single-use plug to reduce infection risk. The drain is free from cables which are hard to clean. Also enables faster emptying time.



### Seat Step

Midwives strongly recommend a raised flat surface for the mother to step into and for exit. Can also be used for the mother to lean on and for a partner to sit on.



### Rim To Rest

Midwives recommend a 5" rim for women to safely rest on during entry and exit. Midwives can also sit on the wide rim to observe the mother.



## FP3 POOL FEATURES CONT...



### Handle Device

The handle device can be used to grip and give women a point to pull on in labor.



### Narrower Rim/Shaped Cut Out Area

Midwives requested the rim to facilitate safe monitoring. In addition the midwife can place her arm down to monitor in a more comfortable position.



### Depth

Midwives advise a minimum inside depth of 25". This is a safety measurement for birth. Standard bath tubs are not considered deep enough.



### Softly Curved Edges

Midwives request softly curved edges for the comfort of mother and nurse-midwife.





## MATERIALS & STRUCTURE OF FP3 BIRTH POOL

The FP3 Birth Pool is designed from the ground up to be fit for purpose: to be the best birth pool available. Every aspect of its design and manufacture has been carefully chosen with the goals of safety, availability, comfort & convenience in mind. In this article we will focus on the choice of materials and structure of the pool.

The pool surface material is Lucite (™) acrylic. Lucite has a high hardness and low porosity. This means it is resistant to scratching and staining. If the surface is damaged, then it is easily returned to its original finish by sanding and buffing the affected area – this can be done without removal of the pool and with standard tools by the hospital's maintenance team, resulting in minimal loss of availability. The smooth surface and low porosity facilitates thorough cleaning and decontamination with separate or combined detergent and chlorine based sterilisation agents.

The pool structure is created through the following steps:

Two sheets of Lucite are vacuum-formed into the inner and outer shape of the custom-designed FP3 pool. These are called “shells”.

The underside of each shell – that side not facing outwards – is then reinforced with a strengthening layer of glass fibre.

The two shells are then placed together and an adhesive putty is injected between the shells to bond them together and provide additional stiffness.

After the putty has dried, the edges of the pool are trimmed and hole for drain is drilled.

This creates a birth pool with a high degree of rigidity and capable of supporting a 136kg person sitting on the rim.



# INSTALLATION PROCESS

The Edel Immersys FP3 professional labour and birth pool is designed to be easy for your organisation or contractors to specify and install. Once in place, the pool looks appropriate and attractive in its surroundings. It is also easy for you to maintain, with no obscure or complex parts or materials that will require you to bring in costly outside contractors for maintenance. Does not require electrical connection.



You will need to ensure that the following common features are available prior to installation.



## WATER SUPPLY

High-pressure, maximum temperature hot and cold supply at your location.



## MIXER TAP

Either mechanical or programmable electric mixing valve. Can be wall mounted or freestanding - pedestal design.



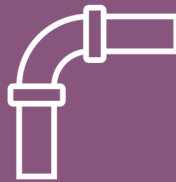
# INSTALLATION PROCESS CONT...

Made in the USA by leading manufacturers American Bath Group, our permanent FP3 labor and birth pool has been designed especially for hospital/birth center use, rather than being adapted from an ordinary household bath. This makes our product reliable, practical, fit for purpose and safe for mothers, baby and nurse-midwives to use. It is also simple for you to install and maintain, therefore, providing you with an excellent return on your investment.



## LEVEL FLOOR

A level floor for a safe installation



## DRAIN

Plumbing with trap in sub-floor or gulley in concrete floor

# PROFESSIONAL BIRTH POOLS FOR HOSPITALS



More and more women in the USA are choosing water births as part of a more natural approach to labor and pain management.

We are very proud of our high-quality products and world-class service and will be dedicated to developing a long-term relationship with you to bring tangible benefits to your hospital.

## Our permanent professional birth pool

The Edel Immersys birth pool is designed and manufactured by world-leading specialists, specifically for professional hospital use. This gives you the confidence that comes from knowing that you are offering only the very best in terms of safety and comfort for mother and baby. Our permanent birth pools are designed with the least point-of-failure of any pool on the market, leading to maximum availability for your waterbirth service.

**Each FP3 pool comes with 100 single use plugs, external step and Drain wastage overflow (DWO).**





# PROFESSIONAL BIRTH POOLS FOR YOUR BIRTH CENTRE



Investing in labour and birth pools show that your birth centre is committed to offering mothers more choice when it comes to their experience – choice they increasingly demand. The opportunity to use a pool in labour can also be a key decision in a woman's choice to use your birth centre.

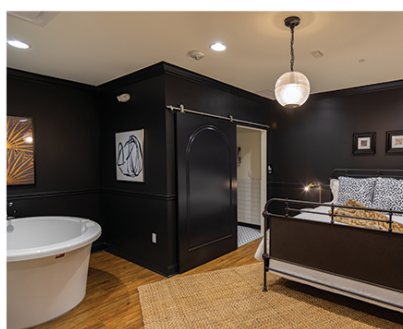
We offer both permanent and portable pools to birth centres so you can choose the most appropriate choice for your centre and mothers in labour.

## Permanent Professional Pools

Our permanent birth pools have been designed from the ground up in collaboration with over 50 UK midwives who are experienced in waterbirths, so you can be confident that you are offering the very best to mother and baby.

The Edel Immersys freestanding pool is simple, reliable and durable. It is easy and cost-effective to fit, use and maintain – giving you an excellent return on your investment. Our permanent birth pool is also designed with the safety of any attendants (midwives, doctors etc.) in mind and to be easy for them to access and use.

**Each FP3 pool comes with 100 single use plugs, external step and Drain wastage overflow (DWO).**



# INFECTION CONTROL - DESIGN IS KEY



The FP3 Birth Pool has simplicity and infection control at the heart of its design. There are fewer things to go wrong than on some Birth Pools: we hear stories of pools being out of service because of drain blockages leading us to decide not to use cable driven plugs. The plug is a single use plug that you throw away after use and no cable in the drain potentially causing obstruction. This is important to Hospitals and Birth Centers as they do not want to have blockages that cause downtime.

The material of the surface of the pool is Lucite (TM) acrylic. This is attractive, functional and also a material that is very easy to repair. If it was scratched, for example by jewellery, it takes minutes for your Estates/facilities team to sand, buff down and then told us that cleaning the pool is easy because the FP3 Pool has a design with minimum sites that are hard to clean, e.g. no handles with rubber seals, or elaborate drain mechanisms. The pool surface is a single piece of acrylic which makes cleaning easy and infection control easier to achieve.

We are often asked by our customers about our single-use plug & chain for the FP3 Labour & Birth Pool and how and why we came to the decision to choose this option over others for plugging the drain.

Two of the long term trends driving birth pool design in the UK and USA markets are:

- \* Rising awareness of the need to prevent of cross-infection
- \* Increased awareness of the negative impact on both the birth outcomes and the mothers' satisfaction when their choice of water for labour pain relief is not available

There was a time when most pools in the UK market had a large ball valve inside a near-horizontal drain pipe. This approach proved both difficult to decontaminate and a trap for items such as; thermometers that entered the pipe unseen and caused a blockage.

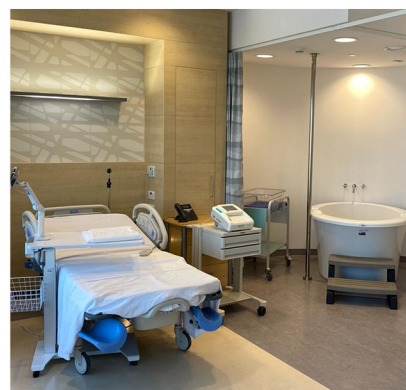
The permanent birthing pools on the market today use one of two designs:

- \* Cable-driven plug with a control on the rim or side of the pool
- \* Plug and chain, either single-use or not

We have consulted with hospitals and birth centers on their experience with cable-driven plugs and discovered that this option was not as highly rated as may have been initially expected. Some had broken mechanisms: either not being able to lift the plug, or the plug falling closed after the release of the control device. Given that water depth in waterbirth tubs is usually greater than for the bathtubs that these devices are designed for, it is perhaps unsurprising that their reliability is less than 100%. No midwife or nurse wants to be or should be fighting with a plug in 20+ inches of used water after the birth of a baby, even when gauntlets are on hand.



# MORE OF OUR MANY FP3 POOL INSTALLATIONS





# TESTIMONIALS



## Leighton Hospital

"Initially we had three Birth pool In the Box Pro Pools, which were wonderful.

We have now upgraded to three FP3 pools and the women absolutley love it, even if they have never thought of water as an option for labour before"



## George Washington

"We had some non=permanent pools, and we wanted to go with something a bit more state of the art for our clients, who are interested in water-birth. We really love this model because it is easy to clean, deep - which was a criteria for us, the stoppers are disposable which is key for infection control. Really excited about this"



## Fredricks Birth Centre

"The pools have been helpful for our laboring mama's.

As the provider the pools are far more comfortable to navigate and support our mothers in this pool than the inflatable pools. They are also easy to clean and I like the design."



Edel Immersys specialises in the design  
and manufacture of labour and birth



# Get in Touch

We would welcome the opportunity to discuss your options  
in full so please fill out the form below,  
Email Jane at [jane.hewitt@edelimmersys.com](mailto:jane.hewitt@edelimmersys.com) or call on  
0800 035 0514



Edel Immersys | Renton WA, USA & Birmingham, UK



@edelimmersys

